

# ORIENT PLEATED

The Orient Transparent Pleated collection is a classic sheer fabric with a timeless look. A palette of modern and vintage colors helps you to create a natural aura of relaxation and comfort in your home.

TRANSPARENT 



### GENERAL INFORMATION

|                             |                       |                         |
|-----------------------------|-----------------------|-------------------------|
| <b>Number of Colors</b>     | 14                    |                         |
| <b>Material Composition</b> | 100% Polyester        |                         |
| <b>Width</b>                | 238 cm                | 94.70 in                |
| <b>Thickness (+/- 5%)</b>   | 0,45 mm               | 0.0177 in               |
| <b>Weight (+/- 5%)</b>      | 140 gr/m <sup>2</sup> | 4.13 oz/yd <sup>2</sup> |
| <b>Pleat Size</b>           | 20 mm                 |                         |



### SPECIAL VALUES

|                                |                      |
|--------------------------------|----------------------|
| <b>Color Fastness to Light</b> | 5+ (DIN ISO 105-B02) |
| <b>Finish</b>                  | Heat setting         |
| <b>PVC Free</b>                | Yes                  |
| <b>Lead Free</b>               | Yes                  |
| <b>Halogen Free</b>            | Yes                  |
| <b>Formaldehyde Free</b>       | Yes                  |
| <b>Phthalates Free</b>         | Yes                  |
| <b>Humid Environment</b>       | Yes                  |

|                                 |                        |
|---------------------------------|------------------------|
| <b>Tensile Strength in Warp</b> | 650.25 N (ISO 13934-2) |
| <b>Tensile Strength in Weft</b> | 360.14 N (ISO 13934-2) |
| <b>Tearing Strength in Warp</b> | 22.56 N (ISO 13937-1)  |
| <b>Tearing Strength in Weft</b> | 16.78 N (ISO 13937-1)  |
| <b>Manufacturing Procedure</b>  | Cold Cut               |
| <b>Care Instructions</b>        | Damp Cloth             |

### SUITABLE FOR



Pleated

### CARE & HANDLING

Remove dust with vacuum cleaner or compressed air. Do not use solvents or any abrasive substance which might damage the coating of the fabric. Clean with a sponge, soft brush or cloth. Leave the blind down until completely dry.

Version 20260128



### THERMAL AND VISUAL PROPERTIES | DIN EN 410, EN ISO 52022-1, DIN EN 14501

| Item Number | Color         | DIN EN 410 |     |     |     |     |     |     | DIN EN 13363-11 |          |          |
|-------------|---------------|------------|-----|-----|-----|-----|-----|-----|-----------------|----------|----------|
|             |               | Rv         | Tv  | Av  | TUV | Rs  | Ts  | As  | Gtot Value      | FC-Value | FC-Class |
| 57001-P-20  | Beige         | 45%        | 51% | 4%  | 37% | 44% | 50% | 6%  | 0,45            | 0,69     | 3        |
| 57005-P-20  | Ice White     | 45%        | 53% | 2%  | 27% | 44% | 52% | 4%  | 0,45            | 0,69     | 3        |
| 57009-P-20  | Cool          | 9%         | 7%  | 84% | 7%  | 30% | 27% | 43% | 0,45            | 0,75     | 3        |
| 57011-P-20  | Neutral Gray  | 17%        | 11% | 72% | 14% | 36% | 27% | 37% | 0,48            | 0,71     | 3        |
| 57013-P-20  | Wild Dove     | 35%        | 19% | 47% | 16% | 40% | 30% | 31% | 0,47            | 0,73     | 3        |
| 57026-P-20  | Sand          | 44%        | 20% | 36% | 12% | 51% | 28% | 21% | 0,45            | 0,7      | 3        |
| 57032-P-20  | Optical White | 52%        | 42% | 6%  | 32% | 50% | 41% | 9%  | 0,45            | 0,64     | 3        |
| 57033-P-20  | Thrush        | 36%        | 14% | 50% | 20% | 33% | 16% | 51% | 0,45            | 0,7      | 3        |
| 57034-P-20  | Silver Fern   | 32%        | 14% | 54% | 15% | 30% | 13% | 57% | 0,45            | 0,7      | 3        |
| 57035-P-20  | Toasted Nut   | 41%        | 16% | 44% | 16% | 38% | 19% | 44% | 0,45            | 0,7      | 3        |
| 57036-P-20  | Gray Mist     | 32%        | 37% | 31% | 22% | 35% | 41% | 24% | 0,45            | 0,7      | 3        |
| 57037-P-20  | Sand Dollar   | 49%        | 29% | 22% | 14% | 47% | 32% | 22% | 0,46            | 0,69     | 3        |
| 57038-P-20  | Drizzle       | 30%        | 20% | 50% | 14% | 42% | 32% | 26% | 0,48            | 0,69     | 3        |
| 57039-P-20  | Beach         | 24%        | 17% | 59% | 10% | 38% | 31% | 31% | 0,45            | 0,7      | 3        |

**Rs** = Solar Reflection  
**Rv** = Light Reflection  
**TUV** = Ultraviolet Transmittance

**Tv** = Light Transmittance  
**Av** = Light Absorption

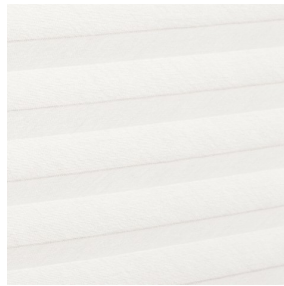
**Ts** = Solar Transmittance  
**As** = Solar Absorption

**Gtot Value** = The total transmission value of solar energy through a combination of window and sun protection  
**FC-Value** = Reduction factor (from 0-1) of the fabric concerning solar energy

## COLORS



57001-P-20  
Beige



57005-P-20  
Ice White



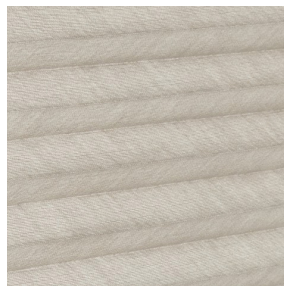
57009-P-20  
Cool



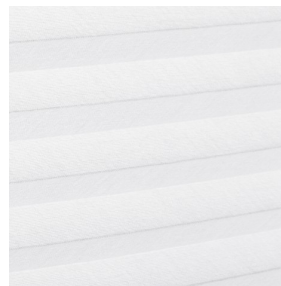
57011-P-20  
Neutral Gray



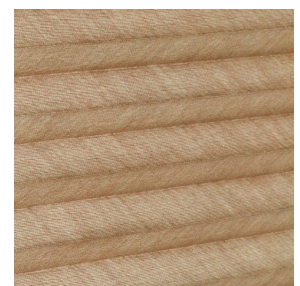
57013-P-20  
Wild Dove



57026-P-20  
Sand



57032-P-20  
Optical White



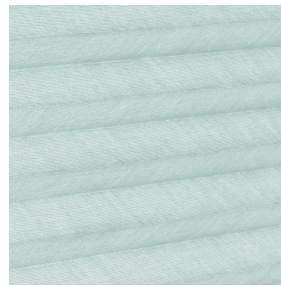
57033-P-20  
Thrush



57034-P-20  
Silver Fern



57035-P-20  
Toasted Nut



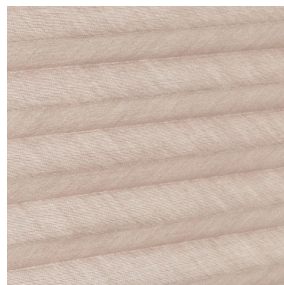
57036-P-20  
Gray Mist



57037-P-20  
Sand Dollar



57038-P-20  
Drizzle



57039-P-20  
Beach