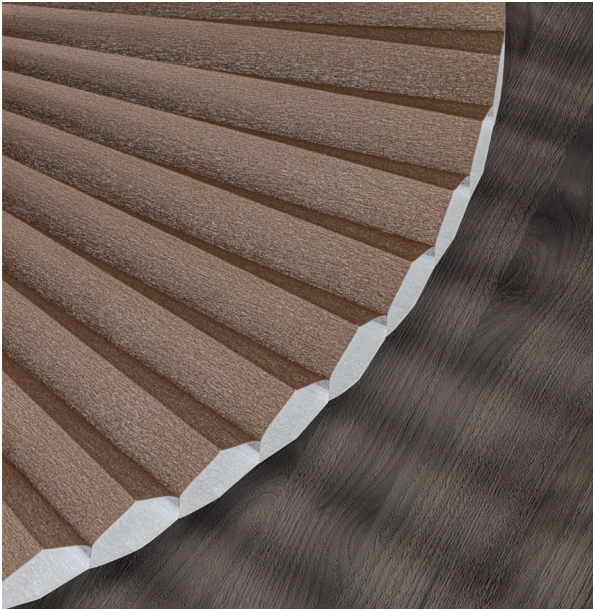


# RIPASSO

Ripasso Light Filtering is our largest cell size Honeycomb fabric in a limited range of designer colors. Its ultra smooth texture gives a sense of luxury and is aesthetically pleasing on large size windows. The crisp white backside provides plenty of reflection for a pleasant environment.

## TRANSLUCENT



## GENERAL INFORMATION

Number of Colors	10	
Material Composition	100% Polyester	
Width	300 cm	118.00 in
Thickness (+/- 5%)	0,25 mm	0.0098 in
Weight (+/- 5%)	145 gr/m <sup>2</sup>	4.28 oz/yd <sup>2</sup>



**38** = Available in 38 mm (9/16 inch) cell size **on request**

**45** = Available in 45 mm (3/4 inch) cell size **on request**

## SPECIAL VALUES

Color Fastness to Light	≥ 4 - 5 (DIN ISO 105-B02)
Transparency	Translucent
PVC Free	Yes
Lead Free	Yes
Halogen Free	Yes
Formaldehyde Free	Yes
Phthalates Free	Yes

Construction	Spun Lace Non-Woven Fabric
Suitable for Workstations	Yes
Humid Environment	No
Manufacturing Procedure	Cold Cut
Care Instructions	Vacuum / Roller / Duster

## SUITABLE FOR



Honeycomb

## CARE & HANDLING

Remove dust with vacuum cleaner or compressed air. Do not use solvents or any abrasive substance which might damage the coating of the fabric. Clean with a sponge, soft brush or cloth. Leave the blind down until completely dry.

### LIGHT AND SOLAR PROPERTIES

Item Number	Color	EU Standard Tested to DIN EN 410							EU Standard Tested to DIN EN 13363-1		
		Rv	Tv	Av	TUV	Rs	Ts	As	Gtot Value	FC-Value	FC-Class
85511-38	White	49%	33%	18%	17%	49%	33%	18%	0,33	0,38	1
85512-38	Cream	47%	40%	13%	20%	47%	40%	13%	0,37	0,42	1
85513-38	Ivory	47%	36%	17%	18%	47%	36%	17%	0,35	0,40	1
85514-38	Light Gray	42%	27%	31%	14%	42%	27%	31%	0,34	0,39	1
85515-38	Taupe	43%	10%	47%	5%	43%	10%	47%	0,26	0,30	1
85516-38	Brown	43%	17%	40%	9%	43%	17%	40%	0,29	0,34	1
85517-38	Gray	43%	19%	38%	10%	43%	19%	38%	0,30	0,35	1
85518-38	Dark Gray	42%	9%	49%	5%	42%	9%	49%	0,26	0,30	1
85519-38	Light Blue	43%	10%	47%	5%	43%	10%	47%	0,26	0,30	1
85520-38	Steel	41%	27%	32%	14%	41%	27%	32%	0,34	0,39	1

**Rv** = Light Reflection

**Tv** = Light Transmittance

**Av** = Light Absorption

**Rs** = Solar Reflection

**Ts** = Solar Transmittance

**As** = Solar Absorption

**TUV** = Ultraviolet Transmittance

**Gtot Value** = The total transmission value of solar energy through a combination of window and sun protection

**FC-Value** = Reduction factor (from 0-1) of the fabric concerning solar energy

### COLORS



85511-38  
White



85512-38  
Cream



85513-38  
Ivory



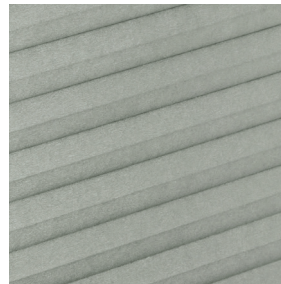
85514-38  
Light Gray



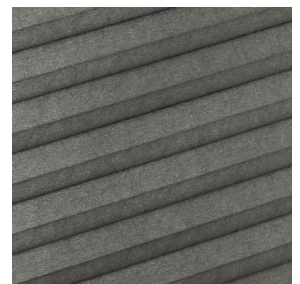
85515-38  
Taupe



85516-38  
Brown



85517-38  
Gray



85518-38  
Dark Gray



85519-38  
Light Blue



85520-38  
Steel