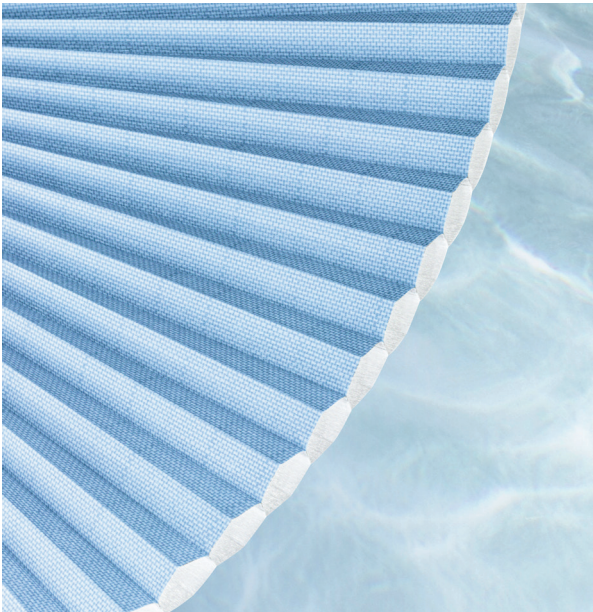


# MOGRI

A delicate, textured honeycomb fabric that plays beautifully with the light, Mogri Light Filtering has a delightfully natural color palette that blends perfectly with its unique woven effect. Choose from a subtle, fresh color range offered in two cell sizes to suit your contemporary or traditional interior decor.

## TRANSLUCENT



## GENERAL INFORMATION

<b>Number of Colors</b>	8	
<b>Material Composition</b>	100% Polyester	
<b>Width</b>	300 cm	118.00 in
<b>Thickness (+/- 5%)</b>	0,25 mm	0.0098 in
<b>Weight (+/- 5%)</b>	152 gr/m <sup>2</sup>	4.48 oz/yd <sup>2</sup>



- 25** = Available in 25 mm (3/8 inch) cell size
- 32** = Available in 32 mm (1/2 inch) cell size
- 38** = Available in 38 mm (9/16 inch) cell size **on request**
- 45** = Available in 45 mm (3/4 inch) cell size **on request**

## SPECIAL VALUES

<b>Color Fastness to Light</b>	Class 4.5 (AATCC 16-2003)	<b>Fungal Resistance</b>	Yes
<b>Finish</b>	Heat Setting	<b>Humid Environment</b>	Yes
<b>PVC Free</b>	No	<b>Suitable for Workstations</b>	Yes
<b>Lead Free</b>	Yes	<b>Breaking Strength in Warp</b>	1600 N/5 cm (ISO 13934-2)
<b>Halogen Free</b>	Yes	<b>Breaking Strength in Weft</b>	1500 N/5 cm (ISO 13934-2)
<b>Formaldehyde Free</b>	Yes	<b>Manufacturing Procedure</b>	Cold Cut / Ultrasonic Cutting
<b>Phthalates Free</b>	Yes	<b>Care Instructions</b>	Damp Cloth
<b>Flame Retardancy</b>	DIN 4102 B1 [EN 13373-1], NFPA-701/ California U.S. Title 19/ BS 5867 Part 2		

## SUITABLE FOR



Honeycomb

## CARE & HANDLING

Remove dust with vacuum cleaner or compressed air. Do not use solvents or any abrasive substance which might damage the coating of the fabric. Clean with a sponge, soft brush or cloth. Leave the blind down until completely dry.

Version 20220810

## LIGHT AND SOLAR PROPERTIES

Item Number	Color	EU Standard Tested to DIN EN 410							EU Standard Tested to DIN EN 13363-1		
		Rv	Tv	Av	TUV	Rs	Ts	As	Gtot Value	FC-Value	FC-Class
83510-25/32	Light Gray	50%	31%	19%	16%	49%	31%	20%	0,39	0,45	1
83511-25/32	Sand	50%	29%	21%	15%	49%	29%	22%	0,38	0,44	1
83512-25/32	Taupe	50%	28%	22%	14%	49%	28%	23%	0,38	0,44	1
83513-25/32	Brown	50%	25%	25%	13%	49%	25%	26%	0,37	0,43	1
83514-25/32	Dark Gray	50%	22%	28%	11%	49%	22%	29%	0,35	0,40	1
83515-25/32	Steel	50%	26%	24%	13%	49%	26%	25%	0,37	0,43	1
83516-25/32	Blue	50%	24%	26%	12%	49%	24%	27%	0,36	0,41	1
83517-25/32	Tea	50%	27%	23%	14%	49%	27%	24%	0,37	0,43	1

**Rv** = Light Reflection

**Tv** = Light Transmittance

**Av** = Light Absorbtion

**Rs** = Solar Reflection

**Ts** = Solar Transmittance

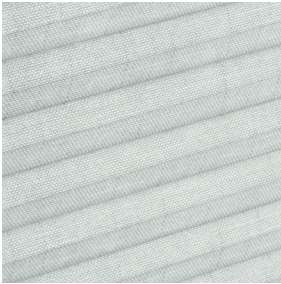
**As** = Solar Absorbtion

**TUV** = Ultraviolet Transmittance

**Gtot Value** = The total transmission value of solar energy through a combination of window en sun protection

**FC-Value** = Reduction factor (from 0-1) of the fabric concerning solar energy

### COLORS



83510-25/32  
Light Gray



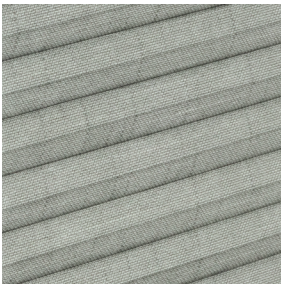
83511-25/32  
Sand



83512-25/32  
Taupe



83513-25/32  
Brown



83514-25/32  
Dark Gray



83515-25/32  
Steel



83516-25/32  
Blue



83517-25/32  
Tea