

GARDA

The Garda collection combines expertly woven yarns to create a fabric that seamlessly blends aesthetic appeal with ultimate functionality. Available in a refined palette of neutral tones, it effortlessly complements any décor, elevating the ambiance of your space.

TRANSLUCENT

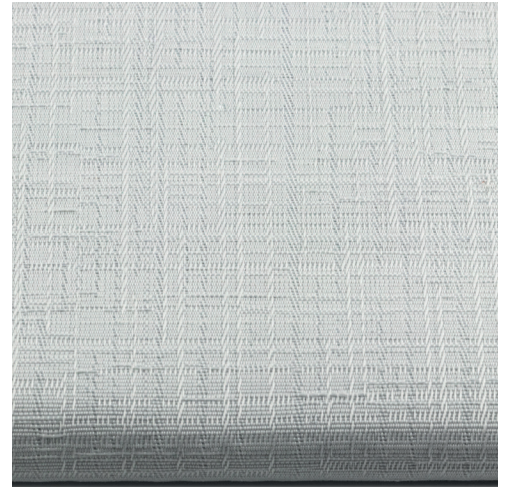


ALSO AVAILABLE AS BLACKOUT



GENERAL INFORMATION

| | | |
|----------------------|-----------------------|--------------------------|
| Number of Colors | 5 | |
| Material Composition | 100% Polyester | |
| Width | 300 cm | 118 in |
| Thickness (+/- 5%) | 0,37 mm | 0.0216 in |
| Weight (+/- 5%) | 150 gr/m ² | 10.62 oz/yd ² |
| Roll Length | 30 m | 32.81 yd |



SPECIAL VALUES

| | |
|-------------------------|-----------------------|
| Color Fastness to Light | 6-7 (DIN ISO 105-B02) |
| Finish | Acrylic Foam Coating |
| PVC Free | Yes |
| Lead Free | Yes |
| Halogen Free | Yes |
| Formaldehyde Free | Yes |

| | |
|---------------------------|------------------------------|
| Phthalates Free | Yes |
| Humid Environment | Yes |
| Suitable for Workstations | No |
| Manufacturing Procedure | Cold Cutting / Laser Cutting |
| Care Instructions | Damp Cloth |

SUITABLE FOR



Roller



Panel

CARE & HANDLING

Remove dust with vacuum cleaner or compressed air. Do not use solvents or any abrasive substance which might damage the coating of the fabric. Clean with a sponge, soft brush or cloth. Leave the blind down until completely dry.

Version 20250710



THERMAL AND VISUAL PROPERTIES | DIN EN 410, EN ISO 52022-1, DIN EN 14501

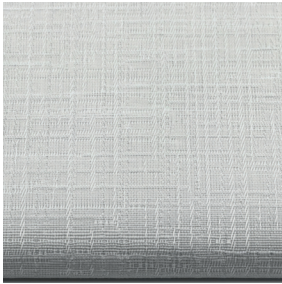
| Item Number | Color | Rs | Ts | As | Rv | Tv | Av | Tuv |
|-------------|--------------|--------|--------|--------|--------|--------|--------|--------|
| 82000- 300 | Ice White | 52,84% | 43,46% | 3,70% | 54,00% | 44,04% | 1,96% | 33,20% |
| 82001- 300 | Off White | 51,40% | 44,52% | 4,08% | 53,00% | 45,49% | 1,51% | 26,80% |
| 82002- 300 | Sand | 44,24% | 38,13% | 17,63% | 44,10% | 37,25% | 18,65% | 22,20% |
| 82003- 300 | Brindle | 33,94% | 28,22% | 37,84% | 32,80% | 26,38% | 40,82% | 17,70% |
| 82004- 300 | Pebble Stone | 27,49% | 21,63% | 50,88% | 27,90% | 21,68% | 50,42% | 16,20% |

Rs = Solar Reflection **Tv** = Light Transmittance **Ts** = Solar Transmittance
Rv = Light Reflection **Av** = Light Absorption **As** = Solar Absorption
TUV = Ultraviolet Transmittance

| Item Number | Color | Glass type C | | | Glass type E | | | Glass type F | | | Glass type G | | |
|-------------|--------------|--|------------|--------|--|------------|--------|--|------------|--------|--|------------|--------|
| | | U _g = 1,2 W/(m ² K) g=0,59 | | | U _g = 0,8 W/(m ² K) g=0,55 | | | U _g = 1.1 W/(m ² K) g=0,64 | | | U _g = 1.0 W/(m ² K) g=0,33 | | |
| | | Gtot | Gtot Class | Fc | Gtot | Gtot Class | Fc | Gtot | Gtot Class | Fc | Gtot | Gtot Class | Fc |
| 82000- 300 | Ice White | 0,4052 | 1 | 0,6868 | 0,3896 | 1 | 0,7084 | 0,4227 | 1 | 0,6605 | 0,2721 | 2 | 0,8244 |
| 82001- 300 | Off White | 0,4102 | 1 | 0,6952 | 0,3939 | 1 | 0,7162 | 0,4285 | 1 | 0,6696 | 0,2736 | 2 | 0,8291 |
| 82002- 300 | Sand | 0,4320 | 1 | 0,7322 | 0,4137 | 1 | 0,7521 | 0,4548 | 1 | 0,7106 | 0,2799 | 2 | 0,8483 |
| 82003- 300 | Brindle | 0,4633 | 1 | 0,7852 | 0,4419 | 1 | 0,8035 | 0,4924 | 1 | 0,7694 | 0,2890 | 2 | 0,8758 |
| 82004- 300 | Pebble Stone | 0,4828 | 1 | 0,8182 | 0,4596 | 1 | 0,8356 | 0,5159 | 0 | 0,8061 | 0,2946 | 2 | 0,8929 |

Gtot Value = The total transmission value of solar energy through a combination of window en sun protection
FC-Value = Reduction factor (from 0-1) of the fabric concerning solar energy
Glass type C = Double glazing, with low emissivity and argon cavity
Glass type E = Triple glazing with low emissivity and argon cavity
Glass type F = Double glazing with low-emissivity coating on position 3, with 90% argon-filled spacer
Glass type G = Solar control glazing with 90% argon-filled spacer

COLORS



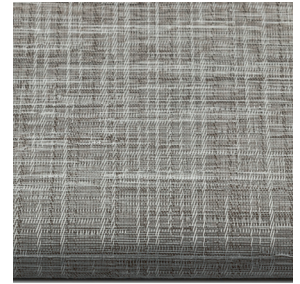
82000- 300
White



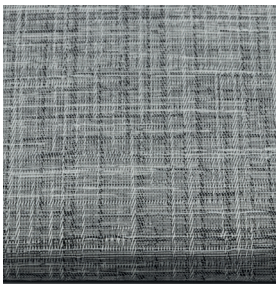
82001- 300
Off-white



82002- 300
Sand



82003- 300
Brindle



82004- 300
Pebble Stone

Scan the QR-code for more information



Garda Translucent

Version 20250710