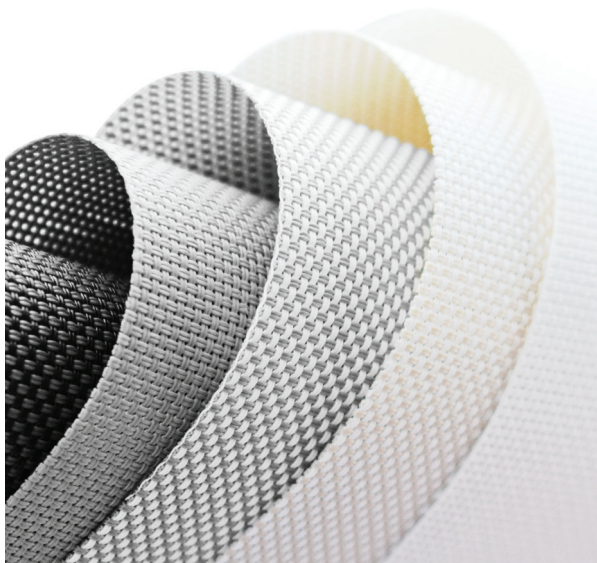


ESSENCE SCREEN 1%, 3% & 5%

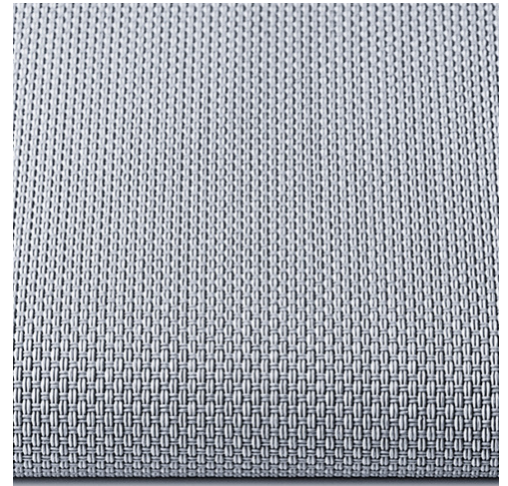
An array of soft and natural color tones adds a sense of serenity giving your interior style a feeling of comfort. With different openness factors available and also the peace of mind of the inherent flame retardant and anti-microbial finish, you can take complete control of the light and the safety in every window.

TRANSPARENT



GENERAL INFORMATION

Number of Colors	3 x 10		
Material Composition	30% Polyester / 70% PVC		
Openness Factor	1%	3%	5%
Thickness (+/- 5%)	0,69 mm	0,60 mm	0,55 mm
	0.0272 in	0.0236 in	0.0217 in
Weight (+/- 5%)	500 gr/m ²	460 gr/m ²	420 gr/m ²
	17.63 oz/yd ²	13.57 oz/yd ²	12.39 oz/yd ²
Width	200 / 300 cm	78.00 / 118.00 in	
Roll Length	30 m	32.81 yd	



SPECIAL VALUES

Color Fastness to Light	8 (DIN ISO 105-B02)		WARP	WEFT	
Flame Retardancy	DIN 4102 B1 / EN 13773-1/NFPA-701, California U.S. Title 19 / CAN ULC-S109-03	Yarn Count	1%	44/inch	62/inch
			3%	46/inch	52/inch
			5%	48/inch	48/inch
Fungal Resistance	Yes (ASTM G21-15)				
Antimicrobial	Yes (ASTM E2149)				
Humid Environment	Yes	Tensile Strength	1%	380lb	380lb
Suitable for Workstations	Yes		3%	380lb	380lb
Abrasion Resistance	> 10,000 (ASTM D4060)		5%	380lb	380lb
Manufacturing Procedure	Cold Cut / Ultrasonic Cutting				
Care Instructions	Damp Cloth				

SUITABLE FOR



CARE & HANDLING

Remove dust with vacuum cleaner or compressed air. Do not scrub. Do not use solvents or any abrasive substance which might damage the fabric. Clean with a sponge or a soft brush dipped in soapy water using mild detergent. Rinse with clean water. Leave the shade down until completely dry. You can also rub the fabric very gently with a clean white pencil eraser to remove small stains.

Version 20250715



The technical data above are average values with a +/- 5% tolerance. The values quotes above represent results of standards and internal tests performed and are provided for information only to enable to make the best use of our products. Our products are subjects to technical evolutions, we remain entitled to modify the characteristics of our products at any time. Actual product color may vary slightly from colors shown on this technical data sheet.

Essence Screen 1%, 3% & 5%

Technical Data Sheet

THERMAL AND VISUAL PROPERTIES | DIN EN 410, EN ISO 52022-1, DIN EN 14501

Item Number	Color	Rs	Ts	As	Rv	Tv	Av	Tuv
E1-000-300 / ...-200*	Ice White	72,68%	17,49%	9,83%	80,10%	13,60%	6,30%	5,60%
E1-001-300 / ...-200*	White	73,44%	14,03%	12,53%	83,80%	11,11%	5,09%	0,80%
E1-002-300 / ...-200*	Ivory	64,09%	13,48%	22,43%	72,20%	9,58%	18,22%	0,30%
E1-003-300 / ...-200*	White/Gray	53,61%	7,95%	38,44%	61,00%	5,20%	33,80%	0,30%
E1-004-300 / ...-200*	Alabaster	48,96%	14,78%	36,26%	52,20%	9,30%	38,50%	0,50%
E1-005-300 / ...-200*	Light Gray	42,93%	8,76%	48,31%	45,40%	4,68%	49,92%	1,20%
E1-006-300 / ...-200*	Gray	22,99%	4,27%	72,74%	23,50%	1,97%	74,53%	1,00%
E1-008-300 / ...-200*	Black/Brown	7,10%	0,58%	92,32%	6,60%	0,48%	92,92%	0,50%
E1-010-300 / ...-200*	Black/Gray	6,60%	0,72%	92,68%	6,30%	0,59%	93,11%	0,50%
E1-011-300 / ...-200*	Black	3,51%	0,38%	96,11%	3,60%	0,35%	96,05%	0,40%
E3-000-300 / ...-200*	Ice White	69,52%	22,25%	8,23%	76,50%	18,61%	4,89%	10,98%
E3-001-300 / ...-200*	White	70,20%	17,87%	11,93%	79,90%	15,25%	4,85%	5,80%
E3-002-300 / ...-200*	Ivory	56,86%	18,61%	24,53%	63,40%	14,59%	22,01%	5,70%
E3-003-300 / ...-200*	White/Gray	42,62%	11,93%	45,45%	47,40%	9,12%	43,48%	5,90%
E3-004-300 / ...-200*	Alabaster	45,16%	18,10%	36,74%	48,40%	12,26%	39,34%	4,90%
E3-005-300 / ...-200*	Light Gray	40,35%	15,66%	43,99%	42,50%	11,91%	45,59%	8,30%
E3-006-300 / ...-200*	Gray	22,73%	7,96%	69,31%	23,10%	6,30%	70,60%	5,50%
E3-008-300 / ...-200*	Black/Brown	8,07%	5,49%	86,44%	7,80%	5,21%	86,99%	5,20%
E3-010-300 / ...-200*	Black/Gray	8,76%	7,54%	83,70%	8,30%	6,72%	84,98%	6,00%
E3-011-300 / ...-200*	Black	3,40%	5,95%	90,65%	3,50%	5,92%	90,58%	5,90%
E5-000-300 / ...-200*	Ice White	69,92%	21,31%	8,77%	76,80%	17,59%	5,61%	10,30%
E5-001-300 / ...-200*	White	68,30%	20,37%	11,33%	77,70%	17,70%	4,60%	7,90%
E5-002-300 / ...-200*	Ivory	56,48%	20,78%	22,74%	63,00%	16,81%	20,19%	7,60%
E5-003-300 / ...-200*	White/Gray	43,26%	14,69%	42,05%	48,40%	11,99%	39,61%	8,00%
E5-004-300 / ...-200*	Alabaster	46,09%	21,17%	32,74%	48,90%	16,49%	34,61%	7,40%
E5-005-300 / ...-200*	Light Gray	40,38%	15,12%	44,50%	42,60%	11,48%	45,92%	8,00%
E5-006-300 / ...-200*	Gray	21,67%	10,05%	68,28%	21,90%	8,12%	69,98%	7,20%
E5-008-300 / ...-200*	Black/Brown	7,97%	8,33%	83,70%	7,60%	7,94%	84,46%	7,80%
E5-010-300 / ...-200*	Black/Gray	8,59%	9,65%	81,76%	8,20%	8,82%	82,98%	8,10%
E5-011-300 / ...-200*	Black	3,35%	8,06%	88,59%	3,40%	7,94%	88,66%	8,00%

Rs = Solar Reflection
Rv = Light Reflection
TUV = Ultraviolet Transmittance

Tv = Light Transmittance
Av = Light Absorption

Ts = Solar Transmittance
As = Solar Absorption

Version 20250715

The technical data above are average values with a +/- 5% tolerance. The values quotes above represent results of standards and internal tests performed and are provided for information only to enable to make the best use of our products. Our products are subjects to technical evolutions, we remain entitled to modify the characteristics of our products at any time. Actual product color may vary slightly from colors shown on this technical data sheet.

Essence Screen 1%, 3% & 5%

Technical Data Sheet

THERMAL AND VISUAL PROPERTIES | DIN EN 410, EN ISO 52022-1, DIN EN 14501

Item Number	Color	Glass type C			Glass type E			Glass type F			Glass type G		
		$U_g=1,2 \text{ W/(m}^2\text{K)} \text{ g}=0,59$			$U_g=0,8 \text{ W/(m}^2\text{K)} \text{ g}=0,55$			$U_g= 1.1 \text{ W/(m}^2\text{K)} \text{ g}=0,64$			$U_g= 1.0 \text{ W/(m}^2\text{K)} \text{ g}=0,33$		
		Gtot	Gtot Class	Fc	Gtot	Gtot Class	Fc	Gtot	Gtot Class	Fc	Gtot	Gtot Class	Fc
E1-000-300 / ...-200*	Ice White	0,3348	2	0,5674	0,3287	2	0,5977	0,3401	2	0,5314	0,2498	2	0,7570
E1-001-300 / ...-200*	White	0,3315	2	0,5619	0,3261	2	0,5928	0,3364	2	0,5256	0,2487	2	0,7536
E1-002-300 / ...-200*	Ivory	0,3618	1	0,6132	0,3529	1	0,6417	0,3724	1	0,5819	0,2578	2	0,7813
E1-003-300 / ...-200*	White/Gray	0,3947	1	0,6689	0,3823	1	0,6952	0,4117	1	0,6433	0,2675	2	0,8107
E1-004-300 / ...-200*	Alabaster	0,4113	1	0,6972	0,3967	1	0,7213	0,4313	1	0,6738	0,2728	2	0,8267
E1-005-300 / ...-200*	Light Gray	0,4296	1	0,7281	0,4132	1	0,7513	0,4532	1	0,7082	0,2781	2	0,8427
E1-006-300 / ...-200*	Gray	0,4935	1	0,8364	0,4701	1	0,8547	0,5294	0	0,8271	0,2972	2	0,9007
E1-008-300 / ...-200*	Black/Brown	0,5443	0	0,9226	0,5153	0	0,9370	0,5900	0	0,9219	0,3124	2	0,9468
E1-010-300 / ...-200*	Black/Gray	0,5460	0	0,9254	0,5168	0	0,9396	0,5920	0	0,9250	0,3129	2	0,9483
E1-011-300 / ...-200*	Black	0,5560	0	0,9423	0,5257	0	0,9557	0,6039	0	0,9435	0,3159	2	0,9574
E3-000-300 / ...-200*	Ice White	0,3461	2	0,5867	0,3385	2	0,6155	0,3534	1	0,5522	0,2534	2	0,7679
E3-001-300 / ...-200*	White	0,3429	2	0,5812	0,3359	2	0,6108	0,3498	2	0,5465	0,2523	2	0,7645
E3-002-300 / ...-200*	Ivory	0,3865	1	0,6551	0,3745	1	0,6809	0,4015	1	0,6274	0,2655	2	0,8044
E3-003-300 / ...-200*	White/Gray	0,4313	1	0,7311	0,4146	1	0,7538	0,4551	1	0,7112	0,2787	2	0,8447
E3-004-300 / ...-200*	Alabaster	0,4245	1	0,7194	0,4081	1	0,7421	0,4467	1	0,6980	0,2769	2	0,8391
E3-005-300 / ...-200*	Light Gray	0,4396	1	0,7450	0,4217	1	0,7666	0,4648	1	0,7262	0,2814	2	0,8527
E3-006-300 / ...-200*	Gray	0,4951	1	0,8392	0,4713	1	0,8570	0,5312	0	0,8300	0,2979	2	0,9026
E3-008-300 / ...-200*	Black/Brown	0,5423	0	0,9191	0,5132	0	0,9332	0,5874	0	0,9178	0,3120	2	0,9455
E3-010-300 / ...-200*	Black/Gray	0,5405	0	0,9161	0,5115	0	0,9301	0,5852	0	0,9143	0,3116	2	0,9441
E3-011-300 / ...-200*	Black	0,5576	0	0,9451	0,5268	0	0,9578	0,6056	0	0,9462	0,3166	2	0,9595
E5-000-300 / ...-200*	Ice White	0,3446	2	0,5841	0,3372	2	0,6132	0,3516	1	0,5494	0,2529	2	0,7664
E5-001-300 / ...-200*	White	0,3497	2	0,5927	0,3418	2	0,6214	0,3577	1	0,5589	0,2544	2	0,7710
E5-002-300 / ...-200*	Ivory	0,3882	1	0,6580	0,3759	1	0,6835	0,4035	1	0,6305	0,2661	2	0,8063
E5-003-300 / ...-200*	White/Gray	0,4299	1	0,7286	0,4131	1	0,7511	0,4533	1	0,7083	0,2784	2	0,8437
E5-004-300 / ...-200*	Alabaster	0,4221	1	0,7155	0,4059	1	0,7380	0,4438	1	0,6934	0,2763	2	0,8373
E5-005-300 / ...-200*	Light Gray	0,4393	1	0,7446	0,4215	1	0,7664	0,4645	1	0,7258	0,2813	2	0,8524
E5-006-300 / ...-200*	Gray	0,4991	1	0,8459	0,4747	1	0,8631	0,5358	0	0,8372	0,2991	2	0,9065
E5-008-300 / ...-200*	Black/Brown	0,5433	0	0,9208	0,5139	0	0,9344	0,5884	0	0,9194	0,3124	2	0,9467
E5-010-300 / ...-200*	Black/Gray	0,5415	0	0,9179	0,5123	0	0,9315	0,5863	0	0,9161	0,3119	2	0,9453
E5-011-300 / ...-200*	Black	0,5582	0	0,9462	0,5272	0	0,9586	0,6062	0	0,9472	0,3169	2	0,9604

- Gtot Value =** The total transmission value of solar energy through a combination of window and sun protection
- FC-Value =** Reduction factor (from 0-1) of the fabric concerning solar energy
- Glass type C =** Double glazing, with low emissivity and argon cavity
- Glass type E =** Triple glazing with low emissivity and argon cavity
- Glass type F =** Double glazing with low-emissivity coating on position 3, with 90% argon-filled spacer
- Glass type G =** Solar control glazing with 90% argon-filled spacer

Version 20250715

The technical data above are average values with a +/- 5% tolerance. The values quotes above represent results of standards and internal tests performed and are provided for information only to enable to make the best use of our products. Our products are subjects to technical evolutions, we remain entitled to modify the characteristics of our products at any time. Actual product color may vary slightly from colors shown on this technical data sheet.

Essence Screen 1%, 3% & 5%

Technical Data Sheet

THERMAL AND VISUAL PROPERTIES | DIN EN 410, EN ISO 52022-1, DIN EN 14501

Item Number	Color	Color Rendering Index	Glare Control Class	Night Privacy Class	Visual Contact Class	Daylight Utilisation Class
E1-000-300	Ice White	90,30	2	2	1	2
E1-001-300	White	88,00	2	2	1	1
E1-002-300	Ivory	78,40	3	2	1	1
E1-003-300	White/Gray	87,20	3	2	1	1
E1-004-300	Alabaster	64,30	3	2	1	1
E1-005-300	Light Gray	90,10	2	2	2	1
E1-006-300	Gray	85,30	4	2	2	0
E1-008-300	Black/Brown	99,10	4	2	2	0
E1-010-300	Black/Gray	98,90	4	2	2	0
E1-011-300	Black	99,60	4	2	2	0
E3-000-300	Ice White	93,60	0	1	2	2
E3-001-300	White	91,90	0	1	2	2
E3-002-300	Ivory	84,60	0	1	2	2
E3-003-300	White/Gray	93,80	0	1	3	1
E3-004-300	Alabaster	75,40	0	2	1	2
E3-005-300	Light Gray	96,50	0	1	2	1
E3-006-300	Gray	96,60	0	1	3	1
E3-008-300	Black/Brown	99,30	1	2	2	1
E3-010-300	Black/Gray	97,70	0	1	3	1
E3-011-300	Black	99,70	0	1	3	1
E5-000-300	Ice White	93,60	0	2	1	2
E5-001-300	White	93,00	0	1	2	2
E5-002-300	Ivory	87,10	0	1	2	2
E5-003-300	White/Gray	94,20	0	1	2	1
E5-004-300	Alabaster	80,80	0	1	2	2
E5-005-300	Light Gray	96,50	0	1	3	1
E5-006-300	Gray	96,90	0	1	3	1
E5-008-300	Black/Brown	99,00	0	1	3	1
E5-010-300	Black/Gray	98,80	0	1	3	1
E5-011-300	Black	99,70	0	1	3	1

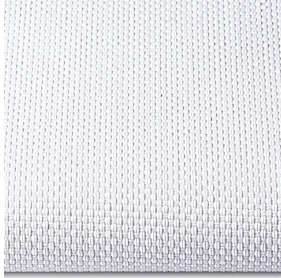
Influence on visual comfort					
Class	0	1	2	3	4
Effect	Very small	small	moderate	high	very high

All data is purely indicative and non-contractual

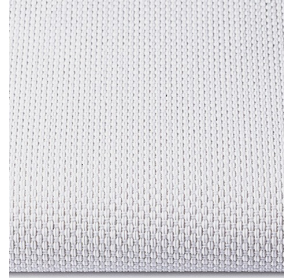
Version 20250715

The technical data above are average values with a +/- 5% tolerance. The values quotes above represent results of standards and internal tests performed and are provided for information only to enable to make the best use of our products. Our products are subjects to technical evolutions, we remain entitled to modify the characteristics of our products at any time. Actual product color may vary slightly from colors shown on this technical data sheet.

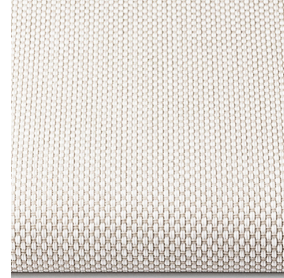
COLORS



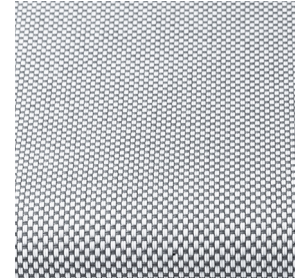
E1-000-300 / ..-200*
E3-000-300 / ..-200*
E5-000-300 / ..-200*
Ice White



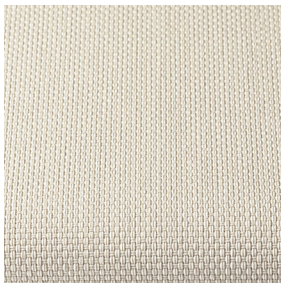
E1-001-300 / ..-200*
E3-001-300 / ..-200*
E5-001-300 / ..-200*
White



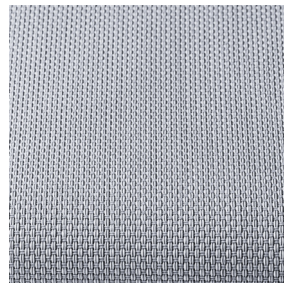
E1-002-300 / ..-200*
E3-002-300 / ..-200*
E5-002-300 / ..-200*
Ivory



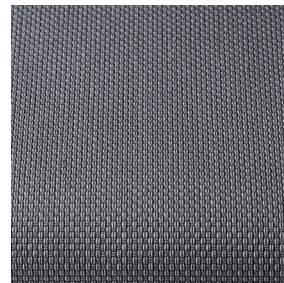
E1-003-300 / ..-200*
E3-003-300 / ..-200*
E5-003-300 / ..-200*
white/gray



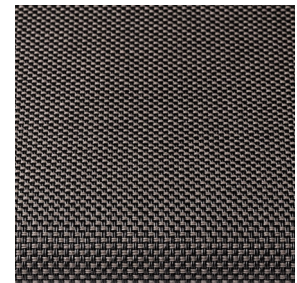
E1-004-300 / ..-200*
E3-004-300 / ..-200*
E5-004-300 / ..-200*
Alabaster



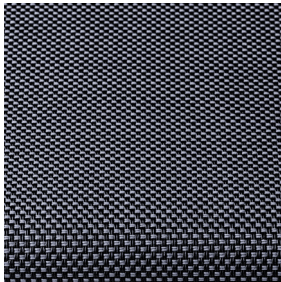
E1-005-300 / ..-200*
E3-005-300 / ..-200*
E5-005-300 / ..-200*
light gray



E1-006-300 / ..-200*
E3-006-300 / ..-200*
E5-006-300 / ..-200*
Gray



E1-008-300 / ..-200*
E3-008-300 / ..-200*
E5-008-300 / ..-200*
Black/ Brown



E1-010-300 / ..-200*
E3-010-300 / ..-200*
E5-010-300 / ..-200*
black/gray



E1-011-300
E3-011-300
E5-011-300
black

Scan the QR-code for more information



Essence Screen 1%



Essence Screen 3%



Essence Screen 5%

Version 20250715