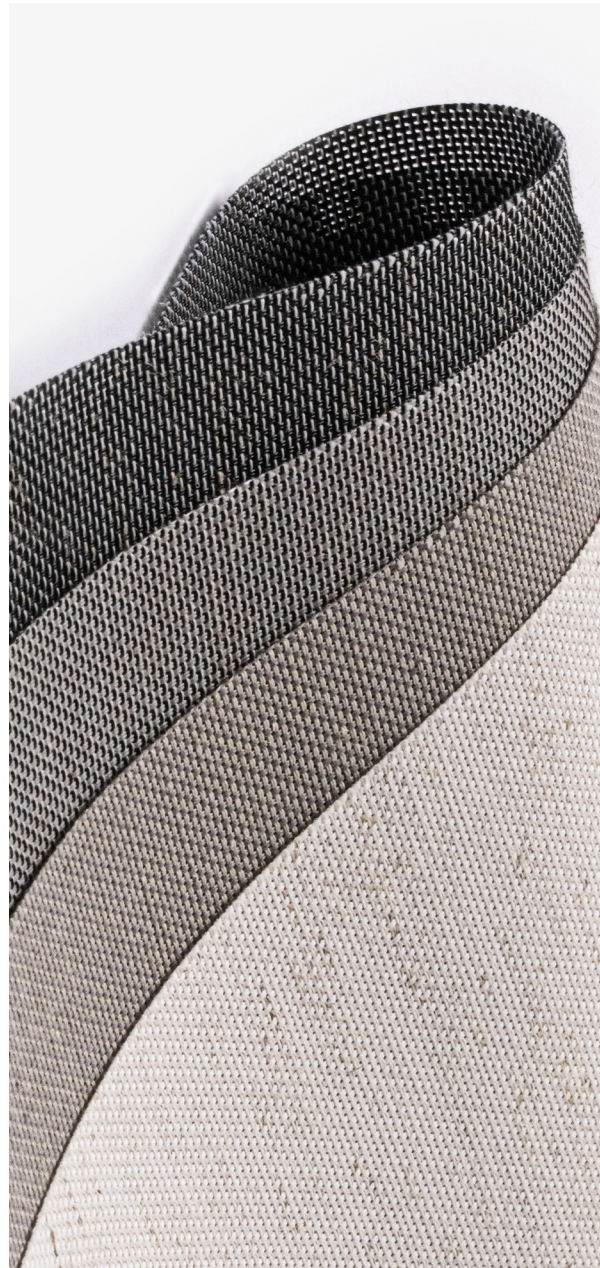


# C-SCREEN LINEN 5%

A delightful vintage look showing hints of nature with its linen effect pattern. This collection contains true linen and is softer and more flexible, making it suitable for a wealth of other blind types such as roller, roman, panel, skylight and vertical shades.

TRANSPARENT



## GENERAL INFORMATION

<b>Number of Colors</b>	6	
<b>Material Composition</b>	18% Polyester / 66% PVC / 16% Linen	
<b>Openness Factor</b>	Approximately 5%	
<b>Width</b>	300 cm	118.00 in
<b>Thickness (+/- 5%)</b>	0,55 mm	0.0217 in
<b>Weight (+/- 5%)</b>	375 gr/m <sup>2</sup>	11.06 oz/yd <sup>2</sup>
<b>Roll Length</b>	30 m	32.81 yd



## SPECIAL VALUES

<b>Color Fastness to Light</b>	Class 4,5 (AATCC 16-2003)	<b>Fungal Resistance</b>	Yes (ASTM G21-15)
<b>Finish</b>	Heat Setting	<b>Antimicrobial</b>	Yes (ASTM E2149)
<b>PVC Free</b>	No	<b>Humid Environment</b>	Yes
<b>Lead Free</b>	Yes	<b>Suitable for Workstations</b>	Yes
<b>Halogen Free</b>	Yes	<b>Breaking Strength in Warp</b>	1600 N/5 cm (ISO 13934-2)
<b>Formaldehyde Free</b>	Yes	<b>Breaking Strength in Weft</b>	1500 N/5 cm (ISO 13934-2)
<b>Phthalates Free</b>	Yes	<b>Manufacturing Procedure</b>	Cold Cut / Ultrasonic Cutting
<b>Flame Retardancy</b>	DIN 4102 B1 / EN 13773-1 / NFPA-701 / California U.S. Title 19 / CAN/ULC-S109 / BS 5867 Part 2	<b>Care Instructions</b>	Damp Cloth

## SUITABLE FOR



## CARE & HANDLING

Remove dust with vacuum cleaner or compressed air. Do not scrub. Do not use solvents or any abrasive substance which might damage the fabric. Clean with a sponge or a soft brush dipped in soapy water using mild detergent. Rinse with clean water. Leave the shade down until completely dry. You can also rub the fabric very gently with a clean white pencil eraser to remove small stains.

Version 20250820



The technical data above are average values with a +/- 5% tolerance. The values quotes above represent results of standards and internal tests performed and are provided for information only to enable to make the best use of our products. Our products are subjects to technical evolutions, we remain entitled to modify the characteristics of our products at any time. Actual product color may vary slightly from colors shown on this technical data sheet.

# C-Screen Linen 5%

# Technical Data Sheet

## THERMAL AND VISUAL PROPERTIES | DIN EN 410, EN ISO 52022-1, DIN EN 14501

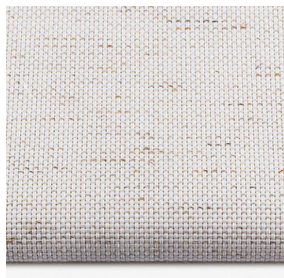
Item Number	Color	Rs	Ts	As	Rv	Tv	Av	Tuv
CL5-001-300	White	58,24%	27,57%	14,19%	65,00%	24,59%	10,41%	9,20%
CL5-002-300	Natural	49,27%	24,04%	26,69%	52,60%	19,80%	27,60%	9,60%
CL5-003-300	Beige	39,40%	19,16%	41,44%	40,70%	15,32%	43,98%	9,50%
CL5-004-300	Taupe	32,64%	16,21%	51,15%	33,50%	13,14%	53,36%	9,80%
CL5-005-300	Gray	24,01%	11,51%	64,48%	24,80%	10,08%	65,12%	8,00%
CL5-007-300	Black	11,75%	9,57%	78,68%	11,90%	9,41%	78,69%	8,30%

**Rs** = Solar Reflection      **Tv** = Light Transmittance      **Ts** = Solar Transmittance  
**Rv** = Light Reflection      **Av** = Light Absorption      **As** = Solar Absorption  
**TUV** = Ultraviolet Transmittance

Item Number	Color	Glass type C			Glass type E			Glass type F			Glass type G		
		U <sub>g</sub> = 1,2 W/(m <sup>2</sup> K) g=0,59			U <sub>g</sub> = 0,8 W/(m <sup>2</sup> K) g=0,55			U <sub>g</sub> = 1.1 W/(m <sup>2</sup> K) g=0,64			U <sub>g</sub> = 1.0 W/(m <sup>2</sup> K) g=0,33		
		Gtot	Gtot Class	Fc	Gtot	Gtot Class	Fc	Gtot	Gtot Class	Fc	Gtot	Gtot Class	Fc
CL5-001-300	White	0,3840	1	0,6509	0,3718	1	0,6760	0,3982	1	0,6222	0,2651	2	0,8032
CL5-002-300	Natural	0,4124	1	0,6990	0,3971	1	0,7221	0,4321	1	0,6752	0,2735	2	0,8288
CL5-003-300	Beige	0,4434	1	0,7516	0,4249	1	0,7725	0,4692	1	0,7332	0,2827	2	0,8566
CL5-004-300	Taupe	0,4648	1	0,7878	0,4440	1	0,8072	0,4947	1	0,7730	0,2890	2	0,8758
CL5-005-300	Gray	0,4918	1	0,8335	0,4682	1	0,8512	0,5271	0	0,8235	0,2970	2	0,9000
CL5-007-300	Black	0,5312	0	0,9004	0,5032	0	0,9149	0,5741	0	0,8970	0,3088	2	0,9358

**Gtot Value** = The total transmission value of solar energy through a combination of window and sun protection  
**FC-Value** = Reduction factor (from 0-1) of the fabric concerning solar energy  
**Glass type C** = Double glazing, with low emissivity and argon cavity  
**Glass type E** = Triple glazing with low emissivity and argon cavity  
**Glass type F** = Double glazing with low-emissivity coating on position 3, with 90% argon-filled spacer  
**Glass type G** = Solar control glazing with 90% argon-filled spacer

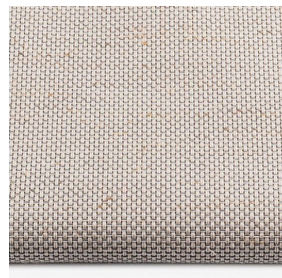
## COLORS



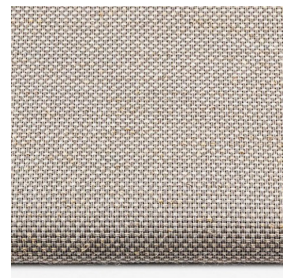
CL5-001-300  
White



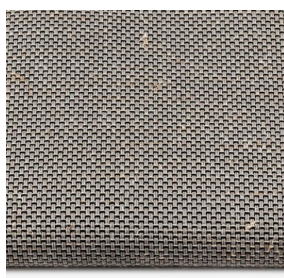
CL5-002-300  
Natural



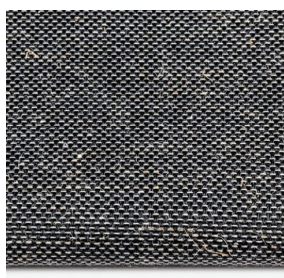
CL5-003-300  
Beige



CL5-004-300  
Taupe



CL5-005-300  
Gray



CL5-007-300  
Black

Scan the QR-code for more information



C-Screen Linen 5%

Version 20250820