

# BLUES

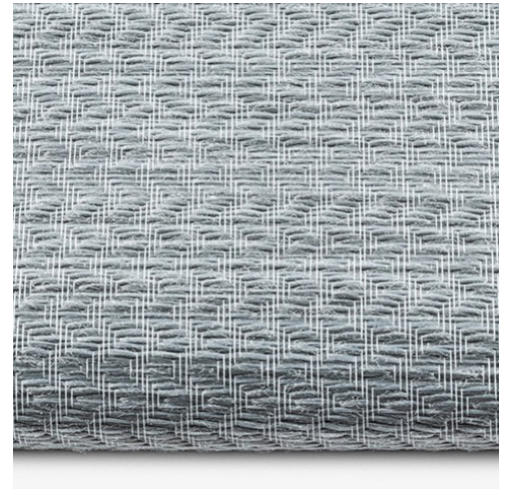
Blues is a rich fabric pattern that has a striking zigzag texture. Its dynamic and fashionable color combinations create a stylish and exotic atmosphere in your room..

TRANSLUCENT



## GENERAL INFORMATION

<b>Number of Colors</b>	9	
<b>Material Composition</b>	100% Polyester	
<b>Width</b>	280 cm	110.00 in
<b>Thickness (+/- 5%)</b>	0,46 mm	0.0181 in
<b>Weight (+/- 5%)</b>	230 gr/m <sup>2</sup>	6.78 oz/yd <sup>2</sup>
<b>Roll Length</b>	40 m	43.74 yd



## SPECIAL VALUES

<b>Color Fastness to Light</b>	5 - 6 (DIN ISO 105-B02)
<b>Finish</b>	Heat Setting
<b>PVC Free</b>	Yes
<b>Lead Free</b>	Yes
<b>Halogen Free</b>	Yes
<b>Formaldehyde Free</b>	Yes
<b>Phthalates Free</b>	Yes

<b>Humid Environment</b>	Yes
<b>Suitable for Workstations</b>	No
<b>Tensile Strength in Weft</b>	1444 N (ISO 13934-2)
<b>Tearing Strength in Warp</b>	4,8 N (ISO 13937-1)
<b>Tearing Strength in Weft</b>	6,7 N (ISO 13937-1)
<b>Manufacturing Procedure</b>	Ultrasonic Cutting
<b>Care Instructions</b>	Damp Cloth

## SUITABLE FOR



Roller



Panel

## CARE & HANDLING

Remove dust with vacuum cleaner or compressed air. Do not use solvents or any abrasive substance which might damage the coating of the fabric. Clean with a sponge, soft brush or cloth. Leave the blind down until completely dry.

Version 20250812



The technical data above are average values with a +/- 5% tolerance. The values quotes above represent results of standards and internal tests performed and are provided for information only to enable to make the best use of our products. Our products are subjects to technical evolutions, we remain entitled to modify the characteristics of our products at any time. Actual product color may vary slightly from colors shown on this technical data sheet.

## THERMAL AND VISUAL PROPERTIES | DIN EN 410, EN ISO 52022-1, DIN EN 14501

Item Number	Color	Rs	Ts	As	Rv	Tv	Av	Tuv
71001	Ivory	74,01%	19,58%	6,41%	78,00%	19,83%	2,17%	3,90%
71002	Cream	64,63%	15,41%	19,96%	59,40%	10,11%	30,49%	2,30%
71003	Chocolate	40,01%	9,88%	50,11%	6,70%	0,06%	93,24%	0,10%
71004	Ice White	75,06%	20,15%	4,79%	75,20%	18,46%	6,34%	15,40%
71005	Cloud	65,40%	15,04%	19,56%	57,00%	8,25%	34,75%	2,60%
71006	Neutral Gray	54,80%	11,92%	33,28%	34,10%	1,82%	64,08%	1,20%
71007	Castor Gray	48,23%	10,68%	41,09%	20,50%	0,49%	79,01%	0,50%
71008	Rock Ridge	49,00%	11,08%	39,92%	23,60%	0,81%	75,59%	0,70%
71009	Gunmetal	44,42%	10,61%	44,97%	13,90%	0,12%	85,98%	0,20%

**Rs** = Solar Reflection      **Tv** = Light Transmittance      **Ts** = Solar Transmittance  
**Rv** = Light Reflection      **Av** = Light Absorption      **As** = Solar Absorption  
**TUV** = Ultraviolet Transmittance

Item Number	Color	Glass type C			Glass type E			Glass type F			Glass type G		
		U <sub>g</sub> =1,2 W/(m²K) g=0,59			U <sub>g</sub> =0,8 W/(m²K) g=0,55			U <sub>g</sub> = 1.1 W/(m²K) g=0,64			U <sub>g</sub> = 1.0 W/(m²K) g=0,33		
		Gtot	Gtot Class	Fc	Gtot	Gtot Class	Fc	Gtot	Gtot Class	Fc	Gtot	Gtot Class	Fc
71001	Ivory	0,3309	2	0,5609	0,3252	2	0,5913	0,3354	2	0,5241	0,2487	2	0,7537
71002	Cream	0,3605	1	0,6110	0,3516	1	0,6394	0,3708	1	0,5793	0,2575	2	0,7803
71003	Chocolate	0,4394	1	0,7447	0,4218	1	0,7669	0,4648	1	0,7262	0,2811	2	0,8518
71004	Ice White	0,3276	2	0,5553	0,3223	2	0,5859	0,3315	2	0,5179	0,2477	2	0,7508
71005	Cloud	0,3579	1	0,6066	0,3494	2	0,6352	0,3677	1	0,5745	0,2567	2	0,7779
71006	Neutral Gray	0,3917	1	0,6639	0,3795	1	0,6900	0,4080	1	0,6375	0,2668	2	0,8084
71007	Castor Gray	0,4128	1	0,6996	0,3982	1	0,7241	0,4331	1	0,6768	0,2731	2	0,8276
71008	Rock Ridge	0,4104	1	0,6955	0,3961	1	0,7201	0,4303	1	0,6723	0,2724	2	0,8254
71009	Gunmetal	0,4252	1	0,7206	0,4092	1	0,7440	0,4479	1	0,6998	0,2768	2	0,8389

**Gtot Value** = The total transmission value of solar energy through a combination of window and sun protection  
**FC-Value** = Reduction factor (from 0-1) of the fabric concerning solar energy  
**Glass type C** = Double glazing, with low emissivity and argon cavity  
**Glass type E** = Triple glazing with low emissivity and argon cavity  
**Glass type F** = Double glazing with low-emissivity coating on position 3, with 90% argon-filled spacer  
**Glass type G** = Solar control glazing with 90% argon-filled spacer

## COLORS



71001  
Ivory



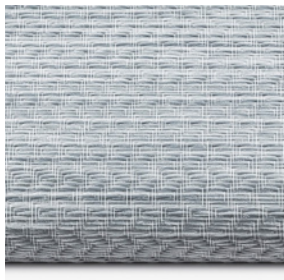
71002  
Cream



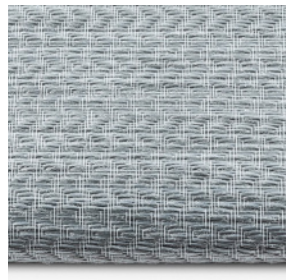
71003  
Chocolate



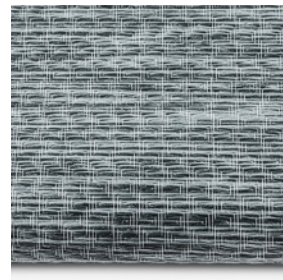
71004  
Ice white



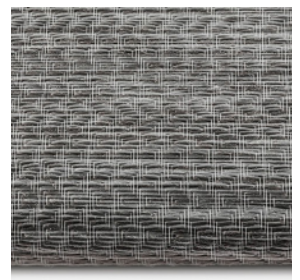
71005  
Cloud



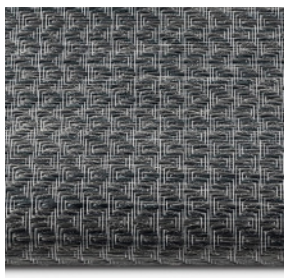
71006  
Neutral Gray



71007  
Castor Gray



71008  
Rock Ridge



71009  
Gunmetal

Scan the QR-code for more information



Blues

Version 20250812