

BAROLO

Barolo Light Filtering is our newest cell size Honeycomb fabric in a limited range of designer colors. Its ultra smooth texture gives a sense of luxury and is aesthetically pleasing on your windows.

TRANSLUCENT 

ALSO AVAILABLE AS BLACKOUT 



GENERAL INFORMATION

Number of Colors	6	
Material Composition	100% Polyester	
Width	300 cm	118.00 in
Thickness (+/- 5%)	0,17 mm	0.0066 in
Weight (+/- 5%)	300 gr/m ²	8.84 oz/yd ²

25 = Available in 25 mm (3/8 inch) cell size



SPECIAL VALUES

Color Fastness to Light	4 - 5 (DIN ISO 105-B02)
Transparency	Translucent
PVC Free	Yes
Lead Free	Yes
Halogen Free	Yes

Formaldehyde Free	Yes
Phthalates Free	Yes
Suitable for Workstations	Yes
Manufacturing Procedure	Cold Cut

SUITABLE FOR



Honeycomb

CARE & HANDLING

Remove dust with vacuum cleaner or compressed air. Do not use solvents or any abrasive substance which might damage the coating of the fabric. Clean with a sponge, soft brush or cloth. Leave the blind down until completely dry.

Version 20251124

THERMAL AND VISUAL PROPERTIES | DIN EN 410, EN ISO 52022-1, DIN EN 14501

Item Number	Color	Rs	Ts	As	Rv	Tv	Av	Tuv
87511	White	79,12%	13,15%	7,73%	83,10%	11,92%	4,98%	6,00%
87512	Ivory	72,34%	11,32%	16,34%	78,50%	10,39%	11,11%	0,20%
87515	Gray	55,71%	7,55%	36,74%	39,20%	0,61%	60,19%	0,00%
87516	Anthracite	40,28%	6,48%	53,24%	8,30%	0,05%	91,65%	0,00%
87517	Sand	60,35%	7,75%	31,90%	48,70%	1,30%	50,00%	0,00%
87519	Black	35,16%	4,08%	60,76%	2,90%	0,00%	97,10%	0,00%

Rs = Solar Reflection
Rv = Light Reflection
TUV = Ultraviolet Transmittance
Tv = Light Transmittance
Av = Light Absorption
Ts = Solar Transmittance
As = Solar Absorption

Item Number	Color	Glass type C			Glass type E			Glass type F			Glass type G		
		$U_g = 1,2 \text{ W/(m}^2\text{K)}$ $g = 0,59$			$U_g = 0,8 \text{ W/(m}^2\text{K)}$ $g = 0,55$			$U_g = 1.1 \text{ W/(m}^2\text{K)}$ $g = 0,64$			$U_g = 1.0 \text{ W/(m}^2\text{K)}$ $g = 0,33$		
		Gtot	Gtot Class	Fc	Gtot	Gtot Class	Fc	Gtot	Gtot Class	Fc	Gtot	Gtot Class	Fc
87511	White	0,3128	2	0,5302	0,3096	2	0,5628	0,3142	2	0,4909	0,2430	2	0,7364
87512	Ivory	0,3345	2	0,5669	0,3288	2	0,5979	0,3400	2	0,5312	0,2495	2	0,7560
87515	Gray	0,3877	1	0,6572	0,3762	1	0,6841	0,4035	1	0,6305	0,2654	2	0,8043
87516	Anthracite	0,4377	1	0,7419	0,4205	1	0,7646	0,4630	1	0,7234	0,2805	2	0,8499
87517	Sand	0,3727	1	0,6317	0,3629	1	0,6598	0,3856	1	0,6025	0,2609	2	0,7906
87519	Black	0,4538	1	0,7692	0,4350	1	0,7908	0,4822	1	0,7535	0,2852	2	0,8644

Gtot Value = The total transmission value of solar energy through a combination of window and sun protection
FC-Value = Reduction factor (from 0-1) of the fabric concerning solar energy
Glass type C = Double glazing, with low emissivity and argon cavity
Glass type E = Triple glazing with low emissivity and argon cavity
Glass type F = Double glazing with low-emissivity coating on position 3, with 90% argon-filled spacer
Glass type G = Solar control glazing with 90% argon-filled spacer

COLORS



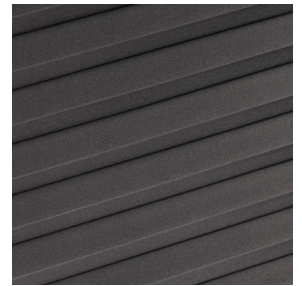
87511
White



87512
Ivory



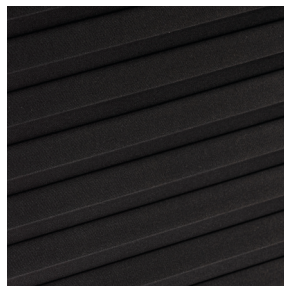
87515
Gray



87516
Anthracite



87517
Sand



87519
Black