

CHIANTI

If you need privacy, complete light control or just simply deep, rich color tones, then Chianti Blackout is the perfect choice for you. Providing you two cell sizes and a range of timeless colors which are the same on the face and the reverse of the fabric, Chianti is the epitome of great taste!

BLACKOUT 

ALSO AVAILABLE AS TRANSLUCENT 



GENERAL INFORMATION

Number of Colors	12	
Material Composition	100% Polyester	
Width	300 cm	118.00 in
Thickness (+/- 5%)	0,16 mm	0.0062 in
Weight (+/- 5%)	185 gr/m ²	5.45 oz/yd ²



25 = Available in 25 mm (3/8 inch) cell size

32 = Available in 32 mm (1/2 inch) cell size

SPECIAL VALUES

Color Fastness to Light	≥ 4 - 5 (DIN ISO 105-B02)
Transparency	Blackout
PVC Free	Yes
Lead Free	Yes
Halogen Free	Yes
Formaldehyde Free	Yes
Phthalates Free	Yes

Construction	Point Bonded
	Film-Laminated
	Non-Woven Fabric
Suitable for Workstations	No
Humid Environment	No
Manufacturing Procedure	Cold Cut
Care Instructions	Vacuum / Roller / Duster

SUITABLE FOR



Honeycomb

CARE & HANDLING

Remove dust with vacuum cleaner or compressed air. Do not use solvents or any abrasive substance which might damage the coating of the fabric. Clean with a sponge, soft brush or cloth. Leave the blind down until completely dry.

Version 20251020



The technical data above are average values with a +/- 5% tolerance. The values quotes above represent results of standards and internal tests performed and are provided for information only to enable to make the best use of our products. Our products are subjects to technical evolutions, we remain entitled to modify the characteristics of our products at any time. Actual product color may vary slightly from colors shown on this technical data sheet.

THERMAL AND VISUAL PROPERTIES | DIN EN 410, EN ISO 52022-1, DIN EN 14501

Item Number	Color	DIN EN 410							DIN EN 13363-11		
		Rv	Tv	Av	Rs	Ts	As	Tuv	Gtot Value	FC-Value	FC-Class
82410-25/32	White	77%	0%	23%	0%	25%	0%	75%	0,16	0,18	2
82411-25/32	Ivory	77%	0%	23%	0%	25%	0%	75%	0,16	0,18	2
82413-25/32	Sand	77%	0%	23%	0%	25%	0%	75%	0,16	0,18	2
82416-25/32	Opal	77%	0%	23%	0%	25%	0%	75%	0,16	0,18	2
82417-25/32	Gray	77%	0%	23%	0%	25%	0%	75%	0,16	0,18	2
82434-25/32	Light Gray	77%	0%	23%	0%	25%	0%	75%	0,16	0,18	2
82435-25/32	Cream	71%	0%	29%	70%	0%	30%	0%	0,18	0,21	2
82436-25/32	Dune	60%	0%	40%	59%	0%	41%	0%	0,22	0,25	2
82437-25/32	Taupe	61%	0%	39%	60%	0%	40%	0%	0,22	0,25	2
82438-25/32	Sage	63%	0%	37%	62%	0%	38%	0%	0,21	0,24	2
82418-25/32	Dark Gray	56%	0%	44%	55%	0%	45%	0%	0,24	0,28	2
82419-25/32	Black	50%	0%	50%	49%	0%	51%	0%	0,26	0,30	2

Rs = Solar Reflection **Tv** = Light Transmittance **Ts** = Solar Transmittance
Rv = Light Reflection **Av** = Light Absorption **As** = Solar Absorption
TUV = Ultraviolet Transmittance

Gtot Value = The total transmission value of solar energy through a combination of window and sun protection

FC-Value = Reduction factor (from 0-1) of the fabric concerning solar energy

COLORS



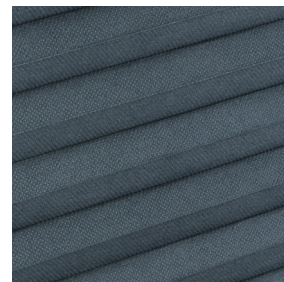
82410-25/32
White



82411-25/32
Ivory



82413-25/32
Sand



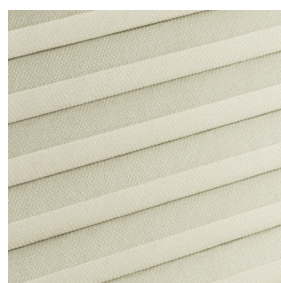
82416-25/32
Opal



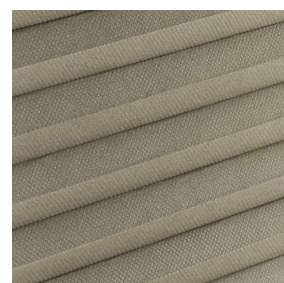
82417-25/32
Gray



82434-25/32
Light Gray



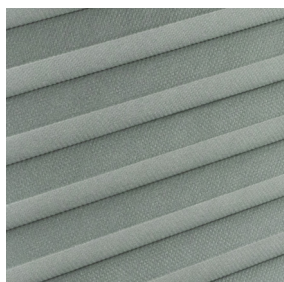
82435-25/32
Cream



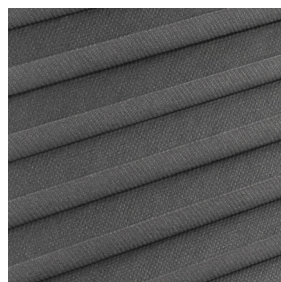
82436-25/32
Dune



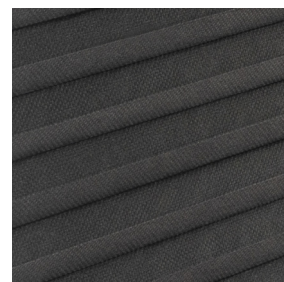
82437-25/32
Taupe



82438-25/32
Sage



82418-25/32
Dark Gray



82419-25/32
Black